

28th Annual

Cardiovascular Conference

America's Premier Meeting
on Innovations in
Cardiovascular Medicine

Feb. 9-13, 2019

Park Hyatt Beaver Creek
Beaver Creek, CO

Course Directors

Simon R. Dixon, MBChB, FACC
Bernard J. Gersh, MBChB, DPhil, MACC
Christopher B. Granger, M.D., FACC
David E. Haines, M.D., FACC
John C. Messenger, M.D., FACC
Renato G. Ramos, M.D., FACC

Sponsored by

Beaumont

OU
WB | School of
MEDICINE



Colorado
CHAPTER

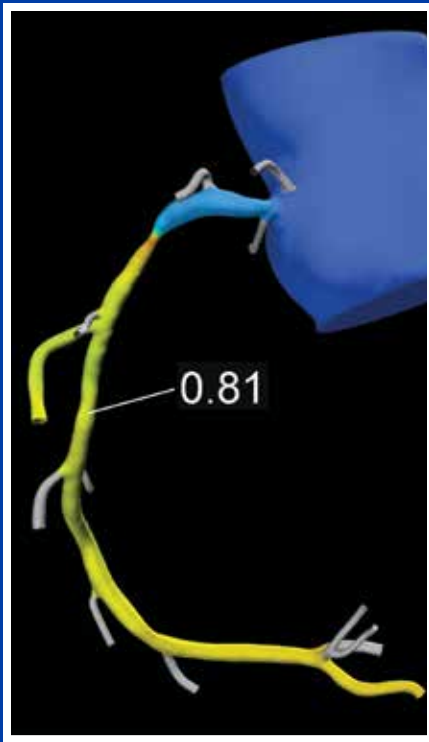
In collaboration with

Duke University School of Medicine
Mayo Clinic
University of Colorado School of Medicine

Supported by

The Lois Walts Farrell
Education and Training Fund

Introduction



The 28th Annual Cardiovascular Conference in Beaver Creek, Colorado has been designed to provide a comprehensive review of the latest advances, current trends and new innovative therapies for cardiovascular disease, delivered by national leaders in the field. Interact with faculty during case-based sessions that address challenges in the diagnosis and management of common cardiovascular conditions such as atrial fibrillation, coronary artery disease, congestive heart failure and valve disease.

The course will also feature a case-based fellows program, and a focus session on innovations and health care reform.

Course Highlights

- CV Team Symposium geared toward APPs, RNs, sonographers and pharmacists
- FFR-CT Session
- Case-based presentations
- Fellows program
- World-renowned faculty
- Networking lunches

Objectives

By attending this conference, attendees should improve their ability to:

- Discuss the use of FFR-CT in the evaluation of myocardial ischemia
- Describe new diabetic agents that prevent cardiovascular events
- Discuss how to use high sensitivity troponin to improve patient care
- Review the new lipid guidelines
- Discuss how to manage neurocardiogenic syncope
- Describe new advances in the management of atrial fibrillation
- Discuss the role of revascularization in heart failure
- Review pitfalls and pearls in the evaluation of aortic stenosis

Target Audience

This conference is designed for cardiologists, cardiothoracic surgeons, vascular medicine specialists, and other cardiology health care providers.

CME Accreditation and Credit Designation

This activity has been planned and implemented in accordance with the accreditation requirements and policies of the Accreditation Council for Continuing Medical Education through the joint providership of Beaumont Health, Colorado Chapter of the American College of Cardiology, Duke University, Mayo Clinic, and the University of Colorado. Beaumont Health is accredited by the ACCME to provide continuing medical education for physicians.

Beaumont Health designates this live activity for a maximum of 27.75* *AMA PRA Category 1 Credit(s)*[™]. Physicians should claim only the credit commensurate with the extent of their participation in the activity.

Saturday = 5.75, Sunday = 5.0, Monday = 8.25, Tuesday = 6.25, Wednesday = 2.5

**Amount of credit subject to change; final credits will be determined based on the final agenda and will be listed on the final CME handout provided in advance of the seminar.*

Non-physician professionals should check with their individual credentialing bodies to confirm that participation in this CME activity will be approved for credit. CME credits can be used to meet the continuing education requirements needed for Michigan physician assistant and nursing relicensure without limitation.

Acknowledgement

This conference will be partially supported by educational grants and display fees from commercial supporters.

Faculty

Course Directors

Simon R. Dixon, MBChB, FACC

Professor of Medicine
Oakland University William Beaumont (OUWB)
School of Medicine
Chair, Department of Cardiovascular Medicine
Dorothy Susan Timmis Endowed Chair of Cardiology
Beaumont Hospital, Royal Oak
Royal Oak, MI

Bernard J. Gersh, MBChB, DPhil, MACC

Professor of Medicine
Consultant, Division of Cardiovascular Diseases
Mayo Clinic
Rochester, MN

Christopher B. Granger, M.D., FACC

Professor of Medicine
Director, Cardiac Care Unit
Duke University Medical Center
Durham, NC

David E. Haines, M.D., FACC

Professor of Medicine
OUWB School of Medicine
Director, Heart Rhythm Center
Beaumont Hospital, Royal Oak
Royal Oak, MI

John C. Messenger, M.D., FACC

Professor of Medicine
University of Colorado School of Medicine
Director, Cardiac Catheterization Lab
Division of Cardiology
Director, Cardiovascular ICU
University of Colorado Hospital
Aurora, CO

Renato G. Ramos, M.D., FACC

Associate Professor of Medicine
OUWB School of Medicine
Emeritus Director, Cardiac Catheterization Lab
Beaumont Hospital, Royal Oak
Royal Oak, MI
Founding Course Director

Faculty

Amr E. Abbas, M.D., FACC

Professor of Medicine
OUWB School of Medicine
Director, Cardiology Research
Beaumont Hospital, Royal Oak
Royal Oak, MI

Larry A. Allen, M.D., MHS, FACC

Director, Heart Failure Program
Division of Cardiology
Professor of Medicine
University of Colorado School of Medicine
Aurora, CO

Amrut V. Ambardekar, M.D., FACC

Associate Professor of Medicine
Medical Director, Cardiac Transplant Program
University of Colorado School of Medicine
Aurora, CO

Michael P. Ashbrook, M.D.

Chief, Clinical Cardiology Fellow
Beaumont Hospital, Royal Oak
Royal Oak, MI

Marc P. Bonaca, M.D., MPH

Associate Professor of Medicine
Cardiology and Vascular Medicine
Director of Cardiovascular Research
University of Colorado School of Medicine
Executive Director, Colorado Prevention Center

Jenna Brinks, MS

Director, Heart & Vascular Business
Beaumont Hospital, Royal Oak
Royal Oak, MI

Robert M. Califf, M.D., MACC

Professor of Cardiology
Duke University School of Medicine
Durham, NC

Elvis Cami, M.D.

Director, Structural Heart Imaging Program
Beaumont Hospital, Royal Oak
Royal Oak, MI

John D. Carroll, M.D., FACC

Professor of Medicine
Division of Cardiology
University of Colorado School of Medicine
Director, Interventional Cardiology
Co-Director, Cardiac and Vascular Center
University of Colorado Hospital
Aurora, CO

Kavitha M. Chinnaiyan, M.D., FACC

Director, Cardiac CT Research
Associate Professor of Medicine
OUWB School of Medicine
Beaumont Hospital, Royal Oak
Royal Oak, MI

Joseph C. Cleveland, Jr., M.D., FACC

Professor of Surgery
Surgical Director
Cardiac Transplantation/Mechanical Support
Division of Cardiothoracic Surgery
University of Colorado School of Medicine
Aurora, CO

James M. Colar, RN, MSN, ACNP-BC*

Nurse Practitioner
Department of Cardiovascular Medicine
Beaumont Hospital, Royal Oak
Royal Oak, MI

Frances A. Cosgrove, MSN, NP-C*

Nurse Practitioner
Duke University Medical Center
Durham, NC

Michael J. Gallagher, M.D., FACC

Associate Professor of Medicine
OUWB School of Medicine
Program Director, Clinical Cardiology Fellowship
Beaumont Hospital, Royal Oak
Royal Oak, MI

Michael R. Gold, M.D., FACC

Professor of Medicine
Chief of Cardiology
Medical University of South Carolina
Charleston, SC

George S. Hanzel, M.D., FACC

Associate Professor of Medicine
OUWB School of Medicine
Director, Cardiac Catheterization Lab
Director, Structural Heart Disease
Beaumont Hospital, Royal Oak
Royal Oak, MI

Timothy D. Henry, M.D., FACC

Professor, Department of Medicine
Lee and Harold Kapelovitz Chair in Cardiology Research
Director, Division of Cardiology
Cedars-Sinai Heart Institute
Los Angeles, CA

Jolin Honas, ACNP, AACCC*

Nurse Practitioner
Centura Health
Denver, CO

James G. Jollis, M.D., FACC

Clinical Professor of Medicine
University of North Carolina
Director of Cardiovascular Imaging
North Carolina Heart and Vascular
Raleigh, NC

Nathan J. Kerner, M.D., FACC

Cardiologist
Assistant Professor of Medicine
OUWB School of Medicine
Beaumont Hospital, Royal Oak
Royal Oak, MI

Ilana Kutinsky, D.O., FACC

Cardiac Electrophysiologist
Assistant Professor of Medicine
OUWB School of Medicine
Beaumont Hospital, Royal Oak
Royal Oak, MI

Daniel B. Mark, M.D., FACC

Professor of Medicine
Duke Clinical Research Institute
Vice Chief for Academic Affairs
Division of Cardiology
Duke University Medical Center
Durham, NC

Heather Mazzola, ACNP-BC, AACCC*

Cardiology Nurse Practitioner
UC Health Medical Group
Colorado Springs, CO

L. Kristin Newby, M.D., FACC

Professor of Medicine
Duke Clinical Research Institute
Co-Director, Duke Cardiac Care Unit
Duke University Medical Center
Durham, NC

Manesh R. Patel, M.D., FACC

Professor of Medicine
Chief, Divisions of Cardiology and Clinical Pharmacology
Duke University Medical Center
Durham, NC

Eric D. Peterson, M.D., FACC

Fred Cobb, M.D. Professor of Medicine
Director, Duke Clinical Research Institute
Duke University Medical Center
Durham, NC

Sean D. Pokorney, M.D.

Assistant Professor of Medicine
Duke University Medical Center
Durham, NC

R. Kevin Rogers, M.D., FACC

Associate Professor of Medicine
Interventional Cardiology/Vascular Medicine
Division of Cardiology
University of Colorado School of Medicine
Aurora, CO

John S. Rumsfeld, M.D., Ph.D., FACC

Chief Innovation Officer, ACC
Professor of Medicine
Division of Cardiology
University of Colorado School of Medicine
Aurora, CO

Robert D. Safian, M.D., FACC

Professor of Medicine
OUWB School of Medicine
Director, Center for Innovation and
Research in Cardiovascular Diseases
Lucia Zurkowski Endowed Chair for CIRC
Program Director, Interventional Cardiology Fellowship
Beaumont Hospital, Royal Oak
Royal Oak, MI

Gregory Schwartz, M.D., Ph.D., FACC

Professor of Medicine
University of Colorado School of Medicine
Chief of Cardiology
Denver VAMC
Denver, CO

Alessandro Vivacqua, M.D.

Thoracic & Cardiac Surgeon
Beaumont Hospital, Royal Oak
Royal Oak, MI

Dominik Wiktor, M.D., FACC

Assistant Professor of Medicine
Interventional Cardiologist
University of Colorado School of Medicine
Aurora, CO

* CV Team Symposium Planning Committee

Schedule of Events

Saturday, Feb. 9

Noon–6 p.m.	3rd Annual CV Team Symposium <i>Sponsored by Colorado Chapter ACC. Lunch provided.</i>	
Noon–2:15 p.m.	Heart Failure and EP	Moderators: James Colar, Heather Mazzola
Noon–12:20 p.m.	EP Drug Review	Michael Gold
12:20–12:40 p.m.	Syncope	Ilana Kutinsky
12:40–1 p.m.	Oral Anticoagulation Update from the Field	Sean Porkorney
1–1:20 p.m.	Look What I Found on CT and MRI	Elvis Cami
1:20–1:40 p.m.	Echo for the Bedside Practitioner	Nathan Kerner
1:40–2 p.m.	Case Presentation	James Colar
2–2:15 p.m.	Case Presentation	Heather Mazzola
2:15–3:15 p.m.	Hands-On Session	Michael Ashbrook
3:15–3:30 p.m.	Break	
3:30–6 p.m.	Coronary and Structural Disease	Moderators: James Colar, Heather Mazzola
3:30–3:50 p.m.	Heart Disease in Women	L. Kristin Newby
3:50–4:10 p.m.	CTO Revascularization	Timothy Henry
4:10–4:30 p.m.	CTA How and When	Kavitha Chinnaiyan
4:30–4:50 p.m.	An Interventionalist Look at Mitral Valve Disease	Dominik Wiktor
4:50–5:10 p.m.	Amyloid Heart Failure	Amrut Ambardekar
5:10–5:30 p.m.	Case Presentation	Frances Cosgrove
5:30–5:50 p.m.	Case Presentation	Jolin Honas
5:50–6 p.m.	Q&A	Panel

Sunday, Feb. 10

6:30–7 a.m.	Breakfast and Exhibits	
7–9:30 a.m.	Plenary Session	Moderator: Bernard Gersh
7–7:10 a.m.	Welcome	Renato Ramos
7:10–7:35 a.m.	Cardiovascular Disease and the 4th Industrial Revolution	Robert Califf
7:35–8 a.m.	Diet and Heart Disease: An Ounce of Prevention is Worth a Pound of Cure	Kavitha Chinnaiyan
8–8:25 a.m.	Cardiologist Role in Diabetic Agents That Prevent Cardiovascular Events	Greg Schwartz
8:25–8:50 a.m.	FFR-CT	Michael Gallagher
8:50–9:15 a.m.	Renal Disease in ACS: Managing Risk	Manesh Patel
9:15–9:30 a.m.	Q&A	Panel
9:30–10 a.m.	Exhibits	
Noon–1:30 p.m.	Lunch	
3:30–4 p.m.	Exhibits	
4:00–6:30 p.m.	Focus Session: Industry, Innovation and Healthcare Reform	Moderator: Robert Califf
4:00–4:25 p.m.	Who Should Get a PCSK9 Inhibitor?	Daniel Mark
4:25–4:50 p.m.	Will Digital Health Save (or Sink) Cardiology?	John Rumsfeld
4:50–5:15 p.m.	Using EMR for Quality and Research	Tim Henry
5:15–5:40 p.m.	Health Policy: Time for Evidence Rather Than Opinion	Eric Peterson
5:40–6:05 p.m.	Randomized Trials and Tribulations, Registries, Endpoints: A Clinical Perspective	Bernard Gersh
6:05–6:30 p.m.	Roundtable Discussion	Panel
6:30–9 p.m.	Western Theme Welcome Reception Put on your cowboy boots and get ready to “Get Down, Turn Around, Go to Town” at the Beaver Creek Saloon!	

Monday, Feb. 11

6:30–7 a.m.	Breakfast and Exhibits	
7–9:30 a.m.	Heart Rhythm	Moderator: David Haines
7–7:25 a.m.	Advances in Anticoagulation for AF	Chris Granger
7:25–7:50 a.m.	CABANA and Beyond: What the Trials Tell us About AF Ablation	David Haines
7:50–8:05 a.m.	Debate: Oral Anticoagulation After Successful AF Ablation - Discontinue Anticoagulation	Sean Pokorney
8:05–8:20 a.m.	Debate: Oral Anticoagulation After Successful AF Ablation - No...Keep it Going!	Ilana Kutinsky
8:20–8:25 a.m.	Discussion	
8:25–8:50 a.m.	Update on Leadless and Subcutaneous Devices	Michael Gold
8:50–9:15 a.m.	How Do I Screen for Asymptomatic AF? Should I Screen for Asymptomatic AF?	David Haines
9:15–9:30 a.m.	Q&A	Panel

Schedule of Events

Monday, Feb. 11
(continued)

9:30–10 a.m.	Exhibits	
10 a.m.–Noon	FFR-CT: The New Paradigm	Moderators: Elvis Cami, Manesh Patel
10–10:20 a.m.	Overview of FFR-CT: Bench-to-Bedside	Manesh Patel
10:20–10:40 a.m.	Clinical Applications and Interpretation	Elvis Cami
10:40–11 a.m.	FFR-CT in the ER	Kavitha Chinnaiyan
11–11:20 a.m.	Pitfalls of FFR-CT	Robert Safian
11:20–11:40 a.m.	Reimbursement Update	Jenna Brinks
11:40 a.m.–Noon	Q&A	Panel
Noon–1:30 p.m.	Lunch	
2–2:30 p.m.	Exhibits	
2:30–3:50 p.m.	Fellows Program: Nightmare Cases in the Cath Lab	Moderator: Manesh Patel Panel: Amr Abbas, Tim Henry, John Messenger
3:50–4 p.m.	Break	
4–6:30 p.m.	Coronary Artery and Peripheral Vascular Disease	Moderator: Tim Henry
4–4:25 p.m.	Using High Sensitivity Troponin to Improve Rather Than Complicate Care	L. Kristin Newby
4:25–4:50 p.m.	STEMI Care: What We Know, What We Need to Know...	Tim Henry
4:50–5:15 p.m.	Indications for Revascularization in Stable IHD: Impact of ORBITA	Bernard Gersh
5:15–5:40 p.m.	Is Triple Therapy After PCI Obsolete? How to Avoid Bleeding	John Messenger
5:40–6:05 p.m.	Optimizing Clinical Outcomes in Vascular Disease	Marc Bonaca
6:05–6:30 p.m.	Q&A	Panel

Tuesday, Feb. 12

6:30–7 a.m.	Breakfast and Exhibits	
7–9:30 a.m.	Valve and Structural Heart Disease	Moderator: Robert Safian
7–7:25 a.m.	Pitfalls and Pearls in the Evaluation of Aortic Stenosis	Amr Abbas
7:25–7:50 a.m.	TAVR: Lessons Learned and New Directions	George Hanzel
7:50–8:15 a.m.	Mitral and Tricuspid Valve Interventions	John Carroll
8:15–8:40 a.m.	Prosthetic Valve Endocarditis	Jamie Jollis
8:40–9:05 a.m.	Biologic Solutions to Aortic Root Replacement	Alessandro Vivacqua
9:05–9:30 a.m.	Q&A	Panel
9:30–10 a.m.	Exhibits	
Noon–1:30 p.m.	Lunch	
2–2:30 p.m.	Exhibits	
2:30–3:50 p.m.	Fellows Program: Tough Clinical Calls	Moderator: L. Kristin Newby Panel: Larry Allen, Kavitha Chinnaiyan, Bernard Gersh
3:50–4 p.m.	Break	
4–6:30 p.m.	Heart Failure and Cardiomyopathy	Moderator: Larry Allen
4–4:25 p.m.	Myocardial Strain Imaging	Nathan Kerner
4:25–4:50 p.m.	New Insights in Heart Failure Management	Larry Allen
4:50–5:15 p.m.	Revascularization in Heart Failure: Is There a Role?	Kevin Rogers
5:15–5:40 p.m.	Advances in Destination LVAD Therapy	Joe Cleveland
5:40–6:05 p.m.	Cardiogenic Shock Vignettes	Robert Safian and Panel (Dixon, Patel, Messenger)
6:05–6:30 p.m.	Q&A	Panel

Wednesday, Feb. 13

6:30–7 a.m.	Breakfast and Exhibits	
7–9:30 a.m.	Clinical Cardiology	Moderator: Daniel Mark
7–7:25 a.m.	Cryptogenic Stroke	George Hanzel
7:25–7:50 a.m.	Approaching the Patient With Statin Intolerance	Chris Granger
7:50–8:15 a.m.	The New Lipid Guidelines: Cholesterol Complexity, Confusion and Consternation	Eric Peterson
8:15–8:40 a.m.	Management of Neurocardiogenic Syncope	Bernard Gersh
8:40–9:05 a.m.	Reflections on 28 Years at Beaver Creek	Robert Califf
9:05–9:25 a.m.	Q&A	Panel
9:25–9:30 a.m.	Conclusion	Simon Dixon

Information

Accommodations

The Park Hyatt Beaver Creek, located next door to Gerald R. Ford Hall, is the host hotel for our conference. The Park Hyatt's location at the base of the mountain, ski-in/ski-out convenience, and unparalleled attention to detail, service and comfort make it an excellent choice for accommodations.

Reserve your room by Jan. 4, 2019, at the group rate of \$529 + tax, per night.

Occupancy	Cut-off: 1/4/2019
Single/Double/King	\$529 + tax

The group rate is first-come, first-served, based on availability. Reserve your room at the Park Hyatt by calling 888-421-1442 and identify yourself as being with 28th Annual Cardiovascular Conference. Room upgrades are available for an additional cost.

Reservation cut-off is Jan. 4, 2019

Check in: 4 p.m., Check out: 12 p.m.

Hotel contracts require Beaumont to be financially liable for unused rooms. The room rate covers the cost of meeting space and the labor for meeting room set up. Staying at the conference hotel also provides you with the benefit of after-hours networking and easy accessibility to the meeting and exhibits. Please help Beaumont avoid unnecessary penalties and keep registration fees low by booking your room at the Park Hyatt.

Transportation, lift ticket and equipment information

Airport shuttle

Colorado Mountain Express offers a scheduled transfer service seven days a week from the Denver International Airport and Vail/Eagle Airport to Beaver Creek. For discounted reservations call **970-754-7433** and reference the group code **BEAUMONT** or log on to https://coloradomountainexpress.com/group_redirect?code=BEAUMONT.

Advance lift tickets

Discounted lift tickets will be valid Feb. 8-17, 2019 and can be used at Beaver Creek (including Bachelor Gulch and Arrowhead), Vail, Keystone, Breckenridge and Arapahoe Basin. Deadline to pre-order discount lift tickets is Friday, Jan. 4. Lift tickets can be purchased online when registering for the conference.

Equipment rental

Gorsuch will be offering a 20% discount on equipment rental. Join the Gorsuch staff on the skating rink level in the ski shop to be arrange your equipment, Gorsuch's ski valet will take over from there! For equipment related questions, call 1-970-949-0786.

Additional information

For information on attractions and the local area, please visit www.beavercreek.snow.com.

Registration information

Registering for the 28th Annual Cardiovascular Conference is easy. You may register online, by fax or phone until Feb. 8, 2019. Only registrations with payment will be processed.

Online:

<http://beaumont.cloud-cme.com/beavercreek2019>

Fax:

248-898-9075

Phone:

800-732-6368

Pre-registration rates are available until Jan. 4, 2019. Online registration closes on Feb. 8, 2019. After Feb. 8, please register on-site at the Gerald R. Ford Hall.

Registration fees

Registration Type	On or before 1/4/19	After 1/4/19
Attending Physician	\$900	\$1,100
Resident, NP, PA-C, other health care providers	\$500	\$650
CV Team Symposium ONLY Saturday, Feb. 9	\$100	\$150
Family Meal Plan <i>*Children are complimentary (up to 18 yrs. old)</i>	\$350	\$350
Adult Guest Meal Plan	\$200	\$200
Western Theme Welcome Reception, Sunday, Feb. 10	Complimentary	

The conference registration fee includes all general sessions, course syllabus, and food and beverage functions Sunday through Wednesday for the registrant only.

Meal packages include all food and beverage functions Sunday through Wednesday.

Cancellation policy

By registering for the conference, you are indicating you have read and accept the following cancellations terms. To be valid, Beaumont Health must receive notification of your cancellation in writing.

A full refund less a \$100 cancellation fee will be issued if written notification is received by Jan. 4, 2019. No refunds will be issued after Jan. 4, 2019.

The course directors reserve the right to cancel the conference due to unforeseen circumstances. In the unlikely event the conference is cancelled, a refund will be issued for the registration fee and any guest fees paid only. No refund or other compensation will be given for any related costs, charges, or expenses to participants, including fees assessed by airline / travel / lodging agencies.

Registration Form


28th Annual Cardiovascular Conference

Name:		<input type="checkbox"/> MD <input type="checkbox"/> DO <input type="checkbox"/> PA-C <input type="checkbox"/> NP <input type="checkbox"/> RN <input type="checkbox"/> Other:	
Address:	City:	State:	Zip:
City, State for name badge (if different from above):			
Cell phone:	Fax:	Email:	
Specialty: <input type="checkbox"/> Clinical Cardiology <input type="checkbox"/> Interventional Cardiology <input type="checkbox"/> Cardiothoracic Surgery <input type="checkbox"/> Internal Medicine <input type="checkbox"/> Family Practice <input type="checkbox"/> Other:			

Form of Payment <input type="checkbox"/> Check payable to Beaumont Health	Credit Cards Accepted: <input type="checkbox"/> American Express <input type="checkbox"/> Discover <input type="checkbox"/> MasterCard <input type="checkbox"/> Visa
Card Number:	Exp. Date: / / Security Code:
Name on Card:	

Registration Fees	On or before 01/04/19	After 01/04/19	#	TOTAL
<input type="checkbox"/> Attending physician	\$900	\$1,100		\$
<input type="checkbox"/> Resident, NP, RN, PA-C, other healthcare providers	\$500	\$650		\$
<input type="checkbox"/> CV Team Symposium ONLY - Saturday, Feb. 9, 2019	\$100	\$150		\$
<input type="checkbox"/> Family Meal Package *Children are complimentary (up to 18 yrs. old)	\$350	\$350		\$
<input type="checkbox"/> Adult Guest Meal Package	\$200	\$200		\$
<input type="checkbox"/> Western Theme Welcome Reception, Dinner Program - Sunday, Feb. 10, 2019	Complimentary			\$
SUBTOTAL				\$
TOTAL				\$

Please provide guest first and last names as you would like them to appear on badges.

Adult guests:
Children's names:
 <input type="checkbox"/> If you have any special requirements to fully participate in this conference, please check here and include written description of your needs. You will be contacted to discuss how we can best assist you.
Online registration closes Feb. 8, 2019 . After that date, only on-site registration will be available.

Advance Ski Ticket Order Form

Name:		<input type="checkbox"/> MD <input type="checkbox"/> DO <input type="checkbox"/> PA-C <input type="checkbox"/> NP <input type="checkbox"/> RN <input type="checkbox"/> Other:	
Address:	City:	State:	Zip:
City, State for name badge (if different from above):			
Telephone:	Fax:	Email:	

Form of Payment <input type="checkbox"/> Check payable to Beaumont Health	Credit Cards Accepted: <input type="checkbox"/> American Express <input type="checkbox"/> Discover <input type="checkbox"/> MasterCard <input type="checkbox"/> Visa
Card Number:	Exp. Date: / / Security Code:
Name on Card:	

Discounted lift tickets will be valid Feb. 8-17, 2019 and can be used at Beaver Creek (including Bachelor Gulch and Arrowhead), Vail, Keystone, Breckenridge and Arapahoe Basin.

Rates

	Adults 13+	Children 5-12
1 Day	\$145	\$100
2 out of 3 days	\$290	\$204
3 out of 5 days	\$406	\$281
4 out of 6 days	\$500	\$352
5 out of 8 days	\$585	\$457
6 out of 9 days	\$674	\$457
Kids 4 years and under ski for FREE!		

Deadline to pre-order discount lift tickets is Friday, Jan. 4, 2019.

Total # of Tickets	Total Amount Due
	\$

Ways to register (for conference and advance ski lift ticket)

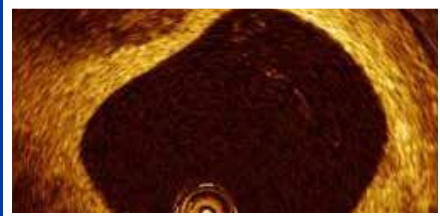
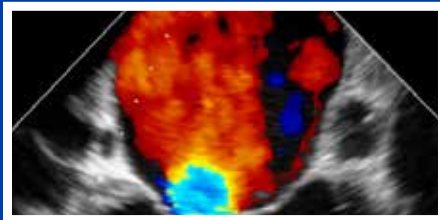
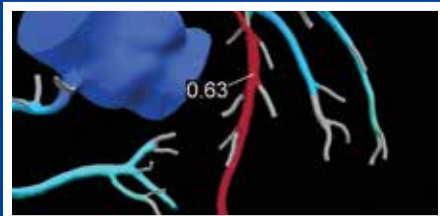
ONLINE: <http://beaumont.cloud-cme.com/beavercreek2019>
FAX: 248-898-9075

MAIL: Completed registration form(s) and payment to:
 Beaumont Health
 Department of Cardiovascular Medicine
 Attn: Kathryn Tewilliger
 3601 West Thirteen Mile Road
 Royal Oak, MI 48073-6769

QUESTIONS?
 Contact Heart and Vascular Conference Department
 800-732-6368
 or via email at:
 HeartandVascularConferences@beaumont.edu

Beaumont

Department of Cardiovascular Medicine
3601 West 13 Mile Road
Royal Oak, MI 48073-6769



28th Annual **Cardiovascular Conference**

America's Premier Meeting on
Innovations in Cardiovascular Medicine

Feb. 9-13, 2019

Park Hyatt Beaver Creek, Beaver Creek, CO

Sponsored by

Beaumont



Colorado
CHAPTER

In collaboration with

**Duke University School of Medicine
Mayo Clinic
University of Colorado School of Medicine**

Supported by

**The Lois Walts Farrell
Education and Training Fund**